

## Food chain paper chain



Name: \_\_\_\_\_



To make this craft, you first need to know a little about food chains. **Food chains** describe the order in which living things depend on each other for food. Food chains generally start with some type of plant followed by an animal that eats that plant. This animal would be followed by another animal that eats the first animal; this would be that animal's **predator**. If this second animal also has a predator, your food chain would continue with that animal's predator, until you reach an animal that doesn't have a predator.

We are going to go through a sample food chain together and then make it into our food chain paper chain!



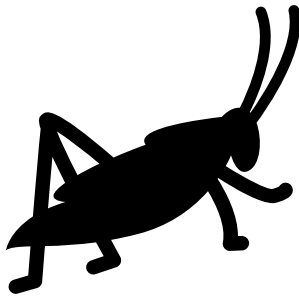
Our sample food chain starts with a plant, I am going to pick a clover. You can pick a different plant if you want. Draw your plant!



Clover

My plant: \_\_\_\_\_

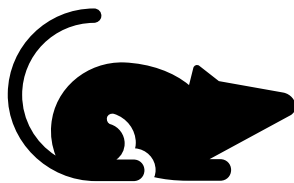
We now need an animal that eats clovers, like a grasshopper. If you chose a different plant, you might have to pick a different animal that eats that plant. Draw your animal!



Grasshopper

My first animal: \_\_\_\_\_

An animal that eats a grasshopper comes next; I will choose a mouse. What animal eats your first animal? Draw it!

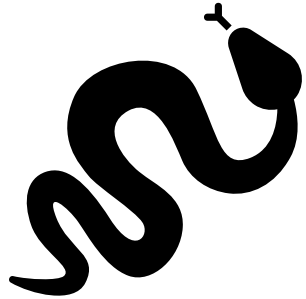


Mouse

My second animal: \_\_\_\_\_



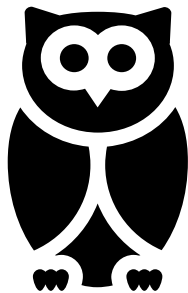
What is an animal that eats a mouse? A snake. What animal eats your second animal?  
Draw your third animal!



Snake

My third animal: \_\_\_\_\_

Does a snake have any predators? Yes, an owl would eat a snake. Does your third animal have a predator?



Owl

My fourth animal: \_\_\_\_\_

Does an owl have predators? Not really, so our food chain is done. If your fourth animal has a predator, you can keep going if you want to. Draw any more animals to finish out your food chain here.



Now we can put our food chain together! Cut a paper strip for each plant and animal in your food chain. These will be the loops in the chain. My food chain had one plant and four animals, so I need to cut five paper strips.

How many paper strips do you need? \_\_\_\_\_

These can be in any colors you want. If you only have white paper, and you want them to be different colors, you could draw on them before going to the next step.



Next, we need the animals for our food chain. You can cut out the pictures you already drew or draw new ones here and cut them out.

Next, we need to attach our drawings to our paper strips. Glue or tape one drawing on each of the paper strips that you cut out.



Now it's time to build our food chain!

Start with the plant paper strip and bend it until the two ends touch and it becomes a loop. Glue or tape the ends together.



Next, we need our first animal, the one that eats your plant. My first animal was a grasshopper, so I'm going to take that paper strip and put it through the plant loop I already made.



Now bend it to form its own loop while still connected to the plant loop and glue or tape the ends together.





Next comes the second animal, the one that eats your first animal. Put this one through the loop you just made for your first animal. For me, this means I have the mouse paper strip through the loop for the grasshopper because the mouse eats the grasshopper.



Bend the mouse strip into its own loop and glue or tape the ends together.





Keep going with this by adding each animal to the chain in the order that they eat the other animals in the chain until all your animals are added.



You did it! Congrats on finishing your very own food chain paper chain!