



SENECA PARK ZOO

Parts of a Plant Activity

Plants are incredibly complex, especially when they are flowering. A flowering plant helps the environment by providing food and shelter for insects of all shapes and sizes. From the stem to the petals each part is important for the plant to flower and provide for the environment.

Find a flower in your yard or neighborhood and take some time to observe the whole plant. Try to identify the different parts of the flower and draw each part in the boxes below,

Petals:

How many petals did it have? _____

Stem:

How long was the stem? _____

Leaves:

What shape were the leaves? _____

Draw the full plant:

Label the petals, stem, and leaves.

After observing the flower and drawing its parts, write some notes of **interesting things** you noticed about the flower. Did you see any **insects** on it when you were observing it? Are there any interesting **features** that should be noted? Record notes or observations below.



SENECA PARK ZOO

Parts of a Plant Activity

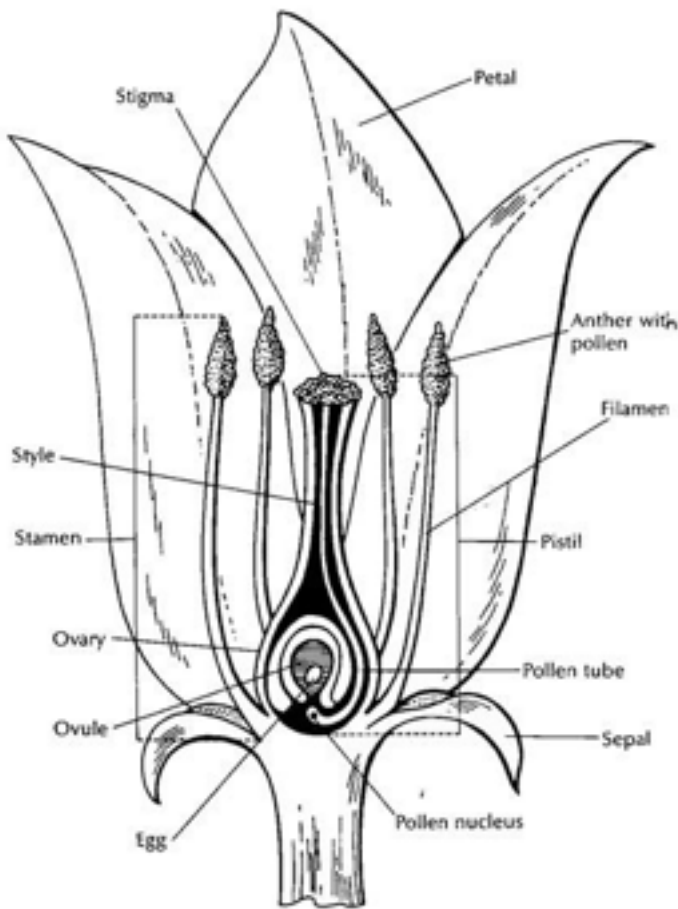
Plants are incredibly complex, especially when they are flowering. A flowering plant helps the environment by providing food and shelter for insects of all shapes and sizes. From the stem to the petals each part is important for the plant to flower and provide for the environment.

Find a flower in your yard or neighborhood and take some time to observe the whole plant. Try to identify the different parts of the flower and draw each part in the boxes below,

Challenge:

For more advanced practice, draw your flower a second time using the diagram below to fill in the more advanced features of the plant.

Parts of a Flower



Draw the full plant:

A large, empty rectangular box with a thin black border, intended for a student to draw the entire plant based on the flower diagram.