

BABOONS: ALL IN THE FAMILY

TEACHER GUIDE FOR EXPEDITION



PROGRAM OVERVIEW

- This 45 minute to 1 hour program leads students on an exploration of *A Step Into Africa* in Seneca Park Zoo.
- Students engage in activities and discussions with a Zoo educator to explore the differences between inherited and learned traits. Students will make observations to determine how traits help animals survive.



LEARNING STANDARDS

NextGen & New York State P-12 Science Learning Standards:

- 3rd Grade: Interdependent Relationships in Ecosystems; Inheritance and Variation of Traits: Life Cycles and Traits
- 4th Grade: Structure, Function, and Information Processing
- 5th Grade: Earth's Systems



HOW TO PREPARE YOUR STUDENTS

Logistics

- Have your students split into groups of 15 or fewer.
- Assign 2-3 chaperones/teachers per group.
- Make sure that students are dressed for the weather.
- Provide name tags for students to wear.

Content

- Students should be familiar with the topic of traits.



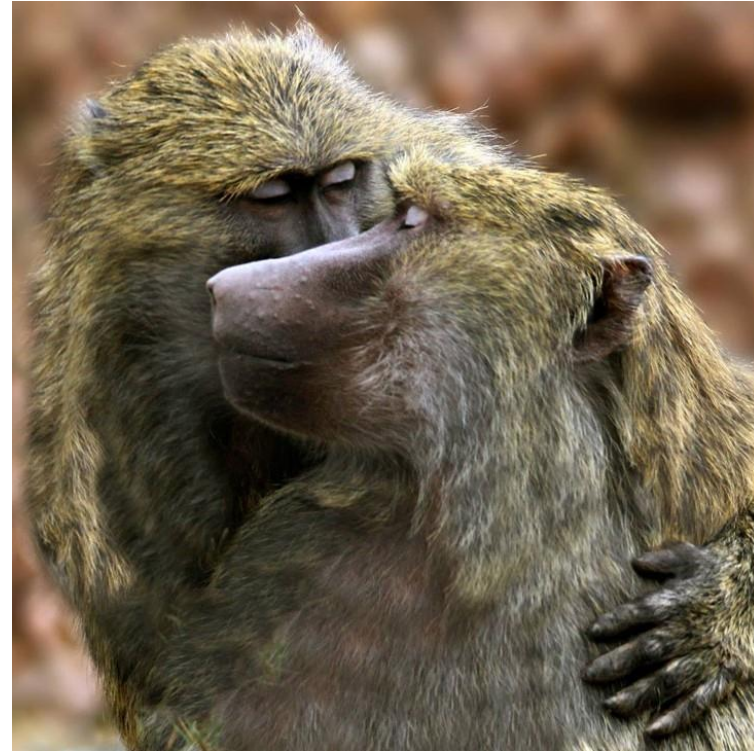
WHAT TO EXPECT WHEN YOU ARRIVE

- Your buses will pull up to the drop off area at the Front Gate.
- A Zoo staff person will check in your bus.
- You will check in at the Front Gate. Make sure that you know the total number of guests (students and teachers/chaperones) in your group. Have payment ready unless you have already submitted a purchase order.
- While you are checking in, a Zoo staff member will greet your group and give a brief presentation on Zoo etiquette and safety. Your group will enter the Zoo and wait at a designated flag area.
- The Zoo educator will take your first group and begin your Expedition. Subsequent Expedition groups will meet the Zoo educator at the entrance to *A Step Into Africa* at the times listed on the schedule provided to begin their Expedition.

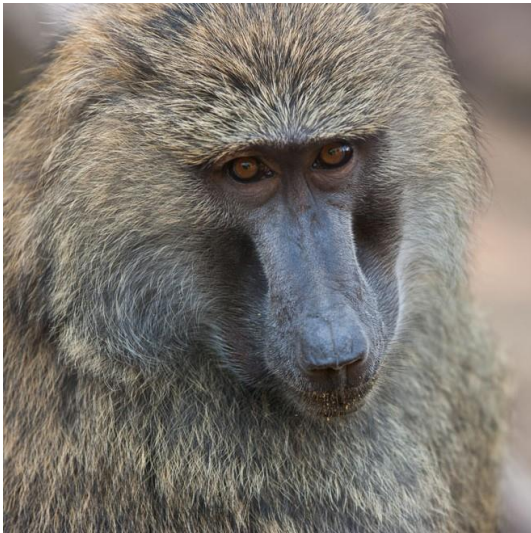


ESSENTIAL QUESTIONS

- What are traits?
- How are inherited traits different than learned traits?
- How do traits help animals survive?



WHAT YOU WILL SEE DURING YOUR EXPEDITION



olive baboons



African lions

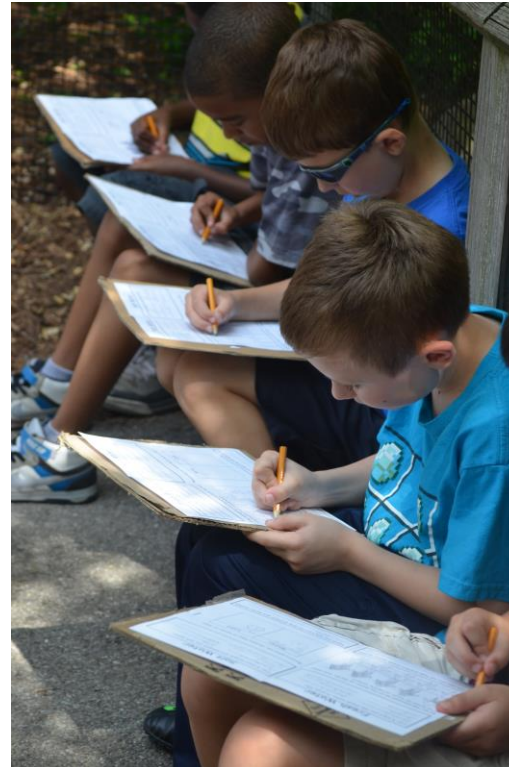


African elephants



WHAT YOUR STUDENTS WILL DO

- Make observations
- Record observations in Field Guides provided by Zoo educator
- Engage in activities and discussions led by Zoo educator



POST VISIT SUGGESTIONS

Create a Creature Activity:

- Students pick their favorite traits that they observed during their Expedition.
- Students use their favorite traits to create a fictional creature.
- Students must describe which animals their creature's traits came from by creating a family tree.
- Note: This creature could be used as a character in a fictional writing assignment.



RESOURCES

- Seneca Park Zoo <http://senecaparkzoo.org/>
- The Ngorongoro Conservation Area Authority <http://ngorongorocrater.org>
- Maasai Association: <http://maasai-association.org>
- ICUN Red List of Threatened Species: <http://www.iucnredlist.org>
- Defenders of Wildlife: <http://www.defenders.org>
- National Geographic: <http://animals.nationalgeographic.com>
- World Wildlife Fund: <http://wwf.panda.org>

