



A MESSAGE FROM THE CEO AND BOARD CHAIR

DEAR FRIENDS AND SUPPORTERS:

We are proud to share the Zoo Society's 2025 Annual Report with you, celebrating a year of growth, fiscal responsibility, inspiring programs, and community impact.

2025 was a year of incredible momentum for our educational and outreach programs. Our formal school programs served 20% more students than in 2024, which means a growing number of teachers are relying on the Zoo's Expeditions and Animal Programs to meet their curriculum requirements – and we love it! ZooCamp registrations also grew, with camps at 96% capacity. Thanks to generous donors, we were able to provide more scholarships than ever before.

2025 also saw growth in our ZooMobile programs, up 11% to 461. This growth is a tribute to our remarkable team of Naturalists, delivering interesting and innovative programming nearly every day of the year. In addition, 130 ZooTeens recorded nearly 44,000 interactions with Zoo guests, our naturalists delivered 635 on-site programs, and our community cleanups (with the assistance of hundreds of volunteers) removed thousands of pounds of trash from our beaches and parks.

In August, we welcomed renowned photographer David Liittschwager back to Seneca Park Zoo to replicate our One Cubic Foot in the Genesee River biodiversity project on its tenth anniversary. This art-meets-science intensive project gives us meaningful data on the health of the Genesee River, documenting the ecosystem of this precious resource that is literally in the Zoo's backyard. By replicating the project, we gain insights into how the river has changed over the past ten years. Our project partners once again included scientists from the Smithsonian Museum of Natural History, and in 2025 we were also joined by professors from the Rochester Institute of Technology, enabling us to conduct eDNA analysis, remote sensing, and assessments of plastic pollution.

In 2025, we conferred our second Conservation Warrior Award to Dr. Kinari Webb, Founder of Health in Harmony. Dr. Webb's approach to conservation is founded on her concept of "radical listening," understanding that community-developed solutions to issues of illegal logging and habitat degradation can result in improved human health, environmental health, and species health. Her seminal work in Borneo, which we have supported for more than a decade, provides a proven model for improving planetary health and is a model that is now being replicated in Madagascar and the Amazon.

Trustees and senior staff spent considerable time in 2025 creating a five-year Long-Range Plan for the Zoo Society to ensure our continued financial sustainability as we partner with Monroe County in the creation of the Zoo as a thriving, regional destination with global conservation impact. The key to our success – and thus



ZooCamp



Community CleanUp



Dr. Kinari Webb



One Cubic Foot - David Liittschwager

the Zoo's success - is ensuring that every experience with the Zoo is engaging and designed to inspire conservation action and build greater involvement with the Zoo. In other words: when you come to the Zoo, or see the ZooMobile out at a library, or assist at a Community Cleanup, we want you to leave that encounter thinking: When can I go back to the Zoo? What can I do to be more involved with the Zoo? How can I take what I learned and share it, and be a better environmental steward?

We know our future is bright, with a new Tropics Complex and Guest Engagement Center slated to open in the summer of 2029, but our present is equally bright, thanks to members and supporters like you.

Thank you for all you do to help us reach hundreds of thousands of people annually with messages of joy, wonder, and hope for wildlife and wild places.

Gratefully,



Pamela Reed Sanchez
President and CEO
Seneca Park Zoo Society



Shelly Doran
Board Chair, 2025
Seneca Park Zoo Society



One Cubic Foot - David Liittschwager



ZooTeens - David Jorgensen

2025

CONSERVATION IMPACT PROTECTING WILDLIFE, LOCALLY AND GLOBALLY

In 2025, the Seneca Park Zoo Society deepened our commitment to protecting wildlife and wild places—supporting conservation efforts both in our own community and across the globe.

Advancing direct conservation funding, staff expertise, and strategic partnerships, the Zoo Society's support of 17 conservation projects that protect species, restore ecosystems, and empower communities totaled more than \$207,000.

These investments reflect the Zoo Society's local impact and global responsibility:

- 52% supported regional conservation efforts
- 31% supported international programs
- 12% supported staff expertise and field engagement
- 5% provided rapid-response and emergency funding

From the Genesee River to Madagascar, these efforts demonstrate the Zoo's role as both a community leader and global conservation partner.

Local Impact: Protecting Our Shared Environment

Here in the Rochester region, conservation efforts focused on restoring habitats and engaging the community in hands-on environmental stewardship. Community Cleanups mobilized 386 volunteers across 16 events, removing more than 2,000 pounds of waste from local waterways. The Butterfly Beltway Program continued to expand native pollinator habitats while connecting residents to conservation in their own neighborhoods.

The Urban Ecologist Program provided workforce development opportunities for youth, preparing the next generation of environmental leaders.

These programs work to both improve local ecosystems and to help build a culture of conservation across our community.

Global Reach: Supporting Species Around the World

Seneca Park Zoo Society's conservation impact extends far beyond Rochester, supporting critical efforts to protect endangered species and fragile ecosystems worldwide.

In 2025, the Zoo supported initiatives including:

- African penguin conservation through SANCCOB's chick bolstering and rescue efforts
- Elephant protection through anti-poaching K9 units in Zambia
- Snow leopard conservation in Kyrgyzstan through sustainable beekeeping programs that reduce human-wildlife conflict
- Polar bear research to better understand maternal denning and cub survival in a changing Arctic
- Red panda habitat protection in Nepal, helping preserve one of the species' most important strongholds



Polar Bear International - Dmytro Cherkasov



Snow Leopard Trust - SLCF-Mongolia

Responding When It Matters Most

In times of urgent need, the Zoo Society can act quickly to mobilize resources. In 2025, Seneca Park Zoo provided emergency funding to support wildfire response efforts in Ranomafana National Park, Madagascar, helping protect critical rainforest habitat and the species that depend on it.

Inspiring Action Through Science and Storytelling

The Zoo also celebrated the 10-year anniversary of One Cubic Foot, a unique project that blends art, science, and community engagement to explore biodiversity in the Genesee River. By partnering with organizations like RIT and the Smithsonian, One Cubic Foot continues to connect people to local ecosystems.



Honoring Conservation Leadership

This year, the Zoo recognized Dr. Kinari Webb as the 2025 Conservation Warrior Award recipient. This honor celebrates individuals whose work creates lasting impact for wildlife and communities.



Dr. Kinari Webb

2025

EDUCATION & COMMUNITY IMPACT INSPIRING THE NEXT GENERATION OF CONSERVATIONISTS

Education remains at the heart of Seneca Park Zoo's mission, connecting thousands of children, families, teachers, and community members with wildlife in ways that inspire curiosity and action.

In 2025, our Education Department delivered 502 programs serving 10,135 participants, continuing a strong trajectory of growth and community engagement.

Across classrooms, camps, school programs, birthday experiences, and volunteer initiatives, the Zoo created meaningful opportunities for guests of all ages to build lasting connections with animals and the natural world.



Record-Breaking Camps and Youth Programs

2025 marked one of the strongest years for ZooCamp. The Zoo welcomed 776 campers across 45 camp sessions, reaching 96% capacity and recording the highest participation since 2018. Summer ZooCamp was especially successful, with 681 campers across 40 sessions.

Families consistently reported that their children returned home excited to share what they had learned—from animal diets and habitats to conservation vocabulary and species-specific facts.

Scholarship access also expanded this year, with 28 Summer ZooCamp scholarships awarded, totaling \$9,031, including a partnership with the Ibero-American Action League to help broaden access.

These programs do more than provide memorable experiences—they help cultivate the next generation of conservation-minded leaders.

Exceptional School and Teacher Engagement

School programs saw continued growth in 2025, making it the best year yet for onsite school programming. The Zoo hosted 245 school programs, engaging 4,122 students and 5,518 total participants through Animal Presentations and Expeditions.

This represents continued year-over-year growth and reinforces the Zoo's role as an essential educational resource for schools across the region. Teachers reported strong satisfaction with their experiences, with 72% saying they felt very positively about the Zoo following their visit.

The Education team also expanded professional development offerings, welcoming 23 educators across two teacher workshops, helping classroom teachers better integrate Zoo resources into their curriculum.



Sophia Lendeck



Wayne Smith

Early Childhood and Family Learning

The Zoo continued to strengthen its early childhood education offerings through programs such as KinderZoo and Book & Beast. These programs provide young learners and their caregivers with age-appropriate, hands-on animal experiences that encourage early science literacy, curiosity, and emotional connection to wildlife.

The return of Book & Beast was especially well received, welcoming 219 participants across seven sessions, with 92% of survey respondents reporting they visited the Zoo because of the program.

Celebrations with Purpose

Birthday parties remained an important way families engage with the Zoo while directly supporting conservation. In 2025, the Zoo hosted 124 birthday parties serving 2,841 participants while exceeding projected revenue goals. The introduction of the new Summer Safari package exceeded expectations, with 12 bookings in its first year.

These experiences also generated direct conservation support, raising more than \$1,200 for wildlife conservation with much of the funding benefiting African penguin conservation efforts.

Empowering Leadership Through Volunteers

In 2025, the Zoo welcomed:

- 130 ZooTeens
- 26 active Docents
- 6 Zoo Ambassadors
- 273 event volunteers

Together, these volunteers contributed 8,936 hours and recorded 43,869 guest interactions.

ZooTeen participation reached an all-time high, reflecting growing interest among local youth in wildlife, environmental careers, and community leadership.

These programs provide critical pathways for skill development, workforce readiness, and conservation advocacy.



Sophia Lendek



Wayne Smith



Anneliese Elkholt

Community Connection Through Education

From toddlers meeting their first animal ambassador to teens exploring careers in wildlife science, education at Seneca Park Zoo is designed to build meaningful, lifelong relationships with nature.

In 2025, 85% of education program participants rated their overall experience as excellent or superior, with 96% rating it good or higher. Outcomes like this demonstrate the Zoo Society's impact as a trusted educational institution and community partner.



ZooBrew - John Schlia



Sophia Lendeck



Zoobilation - John Schlia

2025

SPECIAL EVENTS & PHILANTHROPIC SUPPORT

CELEBRATIONS RAISING CRITICAL FUNDS FOR CONSERVATION AND EDUCATION

In 2025, Seneca Park Zoo's signature events brought together thousands of guests, members, donors, and community partners in support of wildlife and conservation.

From beloved annual traditions to newer mission-driven experiences, special events played a vital role in strengthening community connection while generating critical support for the Zoo's education and conservation work.

These events are opportunities for our community to invest directly in protecting wildlife and wild places.

ZooBrew: A Community Favorite Continues to Grow

ZooBrew continued its momentum as one of the Zoo's most popular fundraising events. In 2025, the event sold more than 9,000 tickets, welcoming thousands of guests for an unforgettable evening experience at the Zoo. This year also marked the first-ever

ZooBrew Season Pass, with 52 passes sold, demonstrating growing enthusiasm and repeat engagement from the community.

With lead support from Lake Beverage and four first-time sponsors, ZooBrew also delivered direct conservation impact—raising more than \$4,300 for elephant conservation through ticket sales.

By blending entertainment, education, and philanthropy, ZooBrew continues to introduce new audiences to the Zoo's mission in an engaging and accessible way.

Zoobilation: A Record Year for Impact

The Zoo's premier fundraising event, Zoobilation, delivered a record-breaking year in 2025. The event welcomed more than 500 guests, including Zoo members, donors, community leaders, and representatives from 41 corporate sponsors.



ZooBrew - John Schlia



Zoobilation - John Schlia

With generous lead support from LeChase Construction, including Honorary Chair Bill Goodrich, Zoobilation generated more than \$250,000 in proceeds to support conservation and education programs that serve our community.

A standout moment of the evening was the Stand for Conservation call for donations, which raised a record \$83,600, amplified by a generous matching gift from the Glover-Crask Charitable Trust.

These funds directly advance the Zoo Society's work in conservation and education in our community and around the world.

Expanding Mission-Driven Event Experiences

The Zoo also continued to innovate through specialized events centered around conservation, sustainability, and unique guest experiences. Following their introduction to the Rochester market in 2024, Birds, Bees & Brews and Wine for Wildlife continued to strengthen the Zoo's event fundraising portfolio.

Birds, Bees & Brews welcomed more than 500 guests, featuring tastings from local coffee, kombucha, beer, cider, and other regional beverage partners, alongside local food trucks, and conservation-focused programming. The event was made possible through lead support from Kinecta Federal Credit Union.

Meanwhile, Wine for Wildlife elevated the guest experience through sustainably produced local, national, and international wines, in partnership with Pinnacle Wine & Liquor and lead sponsor The SSA Group.

These events demonstrate how mission-aligned programming can create deeper community engagement while supporting fundraising goals.

The Power of Partnership

The success of these events is made possible by the extraordinary generosity of sponsors, donors, volunteers, and community partners.

Corporate partnerships, philanthropic support, and community attendance continue to expand the Zoo's ability to deliver meaningful experiences while investing in its long-term mission.

Every ticket purchased, sponsorship secured, and paddle raised helps ensure that Seneca Park Zoo Society can continue to inspire conservation action for generations to come.

Investing in the Future

Special events are more than moments on the calendar—they are critical drivers of impact.

In 2025, these experiences helped fund:

- wildlife conservation initiatives
- educational programming
- youth scholarships
- community outreach
- future growth opportunities across the Zoo

Together, our supporters are helping transform celebration into conservation.



Birds, Bees & Brews - John Schia



PRIDE Day at the Zoo - Wayne Smith

2025

MEMBERSHIP

12,588

Zoo memberships

1,307

Head of the Herd households

99,078

Member attendance

86%

Memberships went digital





Chandler Scott May



BOARD OF TRUSTEES

OFFICERS

Shelly Doran, **Chair**
W. Jack Plants II, **Vice Chair**
Trisha Butera, **Treasurer**
Katie Lally, **Secretary**

TRUSTEES

Eric Allen
Dan Brady
Luis Burgos
Katrina Busch
Gavin Brownlie, Jr.
Chris Davison
Tarek Eldaher
Linda Hasman*
Suzanne Hunt
Barbara Kelley
Jozef Kuzmkowski
Bob Lee*
Dan Matteo
Patrick Meredith*
James Myers
Kevin Nowack
Pamela O'Connor-Chapman
Chris Stern
Rose Mary Villarrubia-Izzo
David Wilks

TRUSTEES EMERITUS

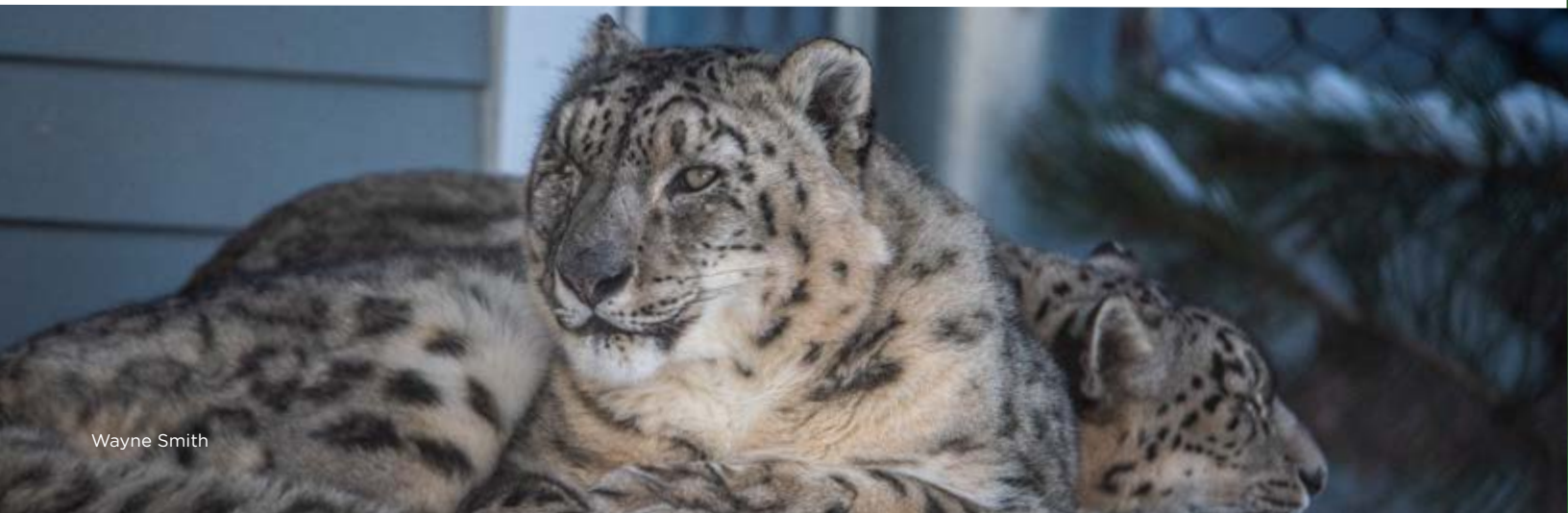
Ruth Baltzer
Stephen Brown
Linda Butrill
Ralph Code, III, Esq.
Michael Hurley
Jim McElheny
William Strassburg
Bob Stiles



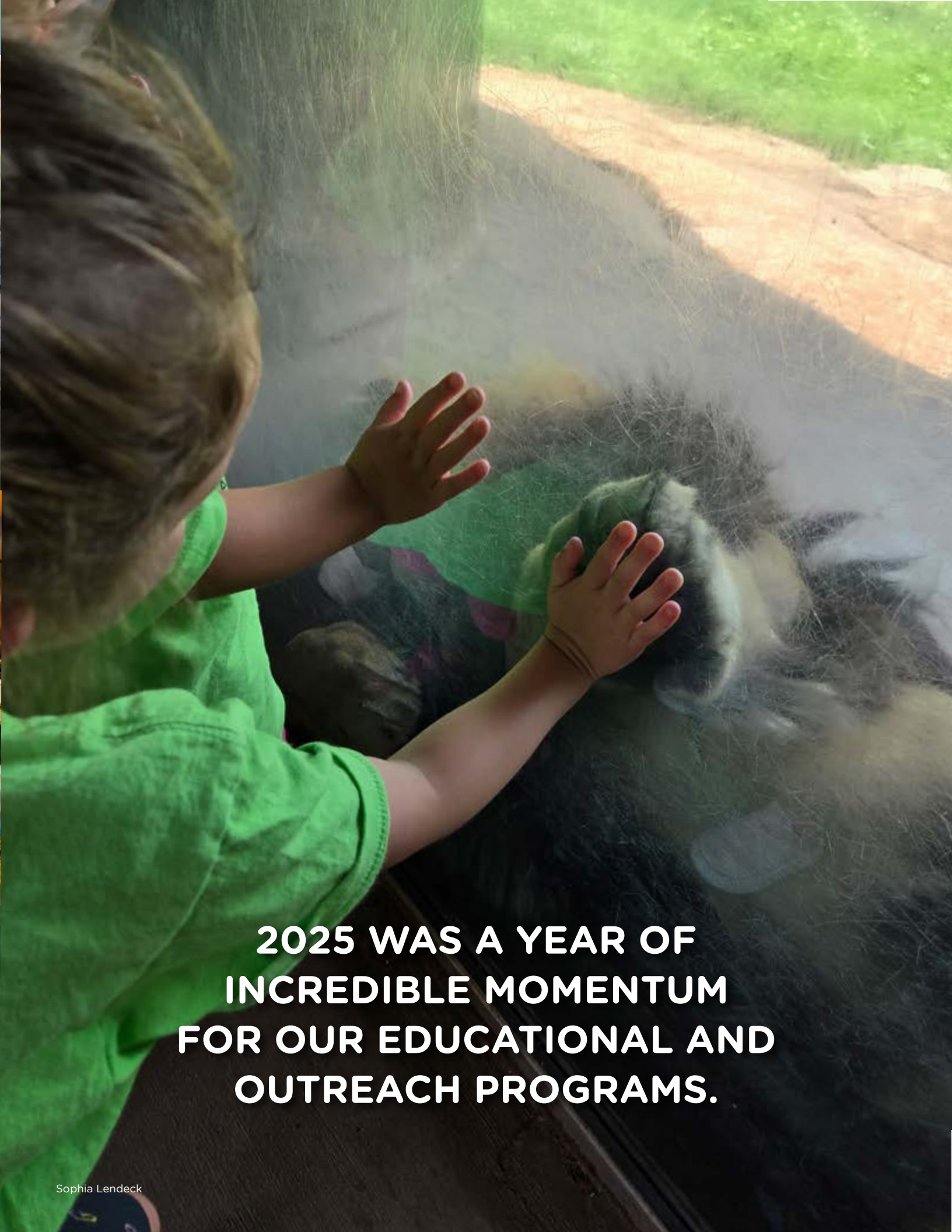
Birds, Bees & Brews - John Schlia



Spooktacular



Wayne Smith

A young child with light brown hair, wearing a bright green t-shirt, is seen from the side, reaching out with both hands to touch a cow through a glass barrier. The cow's face is visible on the other side of the glass, and its dark fur is slightly out of focus. The background shows a dirt path and green grass, suggesting an outdoor farm or zoo setting. The lighting is bright, indicating daytime.

**2025 WAS A YEAR OF
INCREDIBLE MOMENTUM
FOR OUR EDUCATIONAL AND
OUTREACH PROGRAMS.**

PARTNERS IN CONSERVATION AND LEADERSHIP COUNCIL

Partners in Conservation are Zoo members who are invested in our mission to inspire people of all ages and backgrounds to care about and conserve wildlife and wild places. The Leadership Council recognizes philanthropists who commit to leadership unrestricted gifts totaling \$2,500 or more per year for three consecutive years. The generosity of these two groups of donors underpins the impact of the Zoo Society's conservation and education programs which foster the next generations of environmental stewards.

Advocate

Justin Allen and Molly Rose^
 Thomas and Carolyn Argust
 Karen Baumgartner
 David Berg and Dawn Riedy
 Robyn Blanchard-Tacci and James Tacci
 Luis Burgos
 Kevin Carpenter and Justin Newcomer
 John and Betsy Carver
 Buz and Barbara Code
 Glenn and Linda Collins
 Chris and Dawn Davison
 Ken and Linda Dingman
 Phil and Victoria DiTramontos^
 David and Sandra Ebberts^
 Bruce and Kate Ferguson
 Karen Henderberg^
 Peter and Gianna Hilton^
 Stuart and Sandra Johnson
 Monica and Urban Kress
 Jerry and Ann LeBlanc
 Chuck Levensgood and Gina Halasinski
 Dan and Christina Matteo
 Evan and Molly Montanye^
 Kevin Nowack and Iris Zimmerman
 Stacy O'Connor^
 Oleksyn Family
 Peter and Beatrice Pape
 Suzanne and Martin Piotrowski^
 Nicole Rubin and Bill Tripodi
 Carl and Nanette Salvaggio
 Malcolm Schinstine and Lisa Mills^
 Christine and Peter Smith
 Clint Sugnet
 James and Hannah Tantalo
 Lisa Todd and Christopher Baugher
 Jay and Julie Weaver
 Robert and Nicole Wiederhold
 Dave and Laura Wilks
 Maurice and Susan Zauderer
 Mindy and Todd Zyra

Ambassador

Eric and Nicole Allen
 Larry and Vickie Buckley

Katrina Busch and John Quinn
 Trisha and Christopher Butera
 Barbara Carlson
 Roland and Kimberly DeLardge
 Scott and Carol DeMoulin
 Jack and Cathy Dinaburg
 Karen and Andy Gallina^
 David Guadagnino and Mary Beauchamp
 Dick Hogestyn
 Al and Roxanne Keltz
 Lisa Kribs and Courtney Brown
 Jozef and Letielle Kuzmkowski
 Nancy Lowthian
 Richard and Catherine Massie
 Matthew and Christa Miller
 Andrew and Amy Mitchell
 Peggy Ooi
 Sharon Peterson
 Josh and Rebecca Pokracki
 Mary Lou Popolizio and Arthur Dee
 Jay and Peg Rachfal
 Jo Ann Richards
 Pamela Reed Sanchez
 Randy Shepard
 Tim Snyder
 Maggie and Charlie Symington
 Donald and Joanne Titus
 Mark and Karen Wilson
 Gary and Judy Wood

Defender

Maureen Baran*
 Mike and Mary Lou Bopp*
 Dan and Amanda Brady^^
 Gavin and Danelle Brownlie*
 Linda and John Buttrill*
 Gary and Roxanne Chadwick
 Lisa and Walter Critchley*
 Leslie DesMarteau
 Mo and Bob Dobies*
 Shelly and Kirk Doran*
 Tarek and Pamela Eldaher*
 Jody Fleischer
 Bob and Linda Franklin*
 Sarah Hanson*
 Dan and Karen Hayes^
 Mike and Meredith Hurley*

Barbara Kelley and Tom Riley*
 Todd and Jennifer Liebert*
 Jim and Linda McElheny*
 Rich and Bobbi Mohrmann*
 Jim Nickles and Susan Wendel*
 Kip and Amy Palmer^
 W. Jack and Kristina Plants*
 Richard Plympton
 Kathy Purcell*
 Barbara Reifler
 Tom and Ellen Rusling*
 Douglas Stark*
 Chris and Courtney Stern*
 Cindy Steuwe and Robert Podlena
 Bob and Gayle Stiles*
 Claudia and David Weber*
 Katherine Whipple and John Tumminelli*
 Jim White*
 Tom and Phyllis Wickerham*

Champion

Gilbert and Katie Brady^^
 David and Virginia Braverman*
 Chris Klos and Don White*
 John Littwitz and Anne Shepanski*
 Ron Lovell*
 Gordon and Andrea Meyer
 Pamela O'Connor-Chapman and Kenneth Hines*
 Laurel Pace*
 Charles Plant
 Robert and Susan Touhsaent*

Guardian

Stephen Brown and Kirsten Allen Brown*
 Mark and Maureen Davitt*
 Susanna Ferris
 Katie Lally*
 Janet Reed

Conservationist

Len and Lorri Bayer*

^ *New Member in 2025*

* *Leadership Council Member*



David Jorgensen

FOREVER WILD SOCIETY MEMBERS

Forever Wild Society members are visionary supporters who have made a planned gift of \$2,000 or more to perpetuate the future of education and conservation programs at the Seneca Park Zoo for future generations.

Colleene Abair
Rachel Baker August
Robbie Baltzer
Bohdan+ and Maureen Baran
Len and Lorri Bayer
Nina Beach
Darlene Benzon
Kevin and Tami Best
Robyn Blanchard-Tacci and
James Tacci
Charlie Bliss+
Mike and Mary Lou Bopp
Stephen Brown and
Kirsten Allen Brown
Gavin and Danelle Brownlie
Rita+ and Lawrence+ Callahan
Buz and Barbara Code
Spencer and Elizabeth Cook
Karen and Bill Crow
John+ and Mary Lou+ Davison
Mo and Bob Dobies
Laurie Dobson
David and Sandra Ebberts
Susanna Ferris
Ron Fielding
Bob and Linda Franklin
Philip and Beverly Gelsomino
Jim Grapenstetter
Sarah Hanson
Amy Harned
Lynn Harris
Aimee Hofmann
Dick Hogestyn
Robert Holbert
Mary Louise Huff
Mike and Meredith Hurley

Harold Johnson+
Marcia and David Johnson
Barbara Kelley and Tom Riley
Norma Kunisch
Jozef Kuzmkowski^
Patty and Larry Langdon
Lou+ and Sally+ Langie
Beth LaPierre
Chuck Levengood
John Littwitz
Ron Lovell
Peter and Margot Lutz
Carolyn and Edward+ Maruggi
Elizabeth Masco and
Patricia Cecula
Jim and Linda McElheny
Donald+ and Phyllis+ McNelly
Carol Merkel+
Meredith Mock
Megan Murante
Patricia Obstarczyk
Laurel Pace
Laura Pennington
Sharon Peterson
Tom and Donna Proietti
Jim Quick+
Karin Quillinan
Pamela Reed Sanchez
Dennis and Patricia Ringer
Tom and Ellen Rusling
Dr. Neil Scheier
Carol Smereski
Donna Lampen-Smith
Paula V. Smith+
Jeffrey and Jo Ann Snyder
Tom Snyder

Maggie and Charlie Symington
Cynthia Tag
Ric Thomann
Maureen Whalen
Dr.+ and Mrs. Tae Whang
Jim White
Pam Will+
Keith and Betsy Wilson
Dr. Jeff Wyatt
Roxanne Young^
Mark and Nancy Zawacki

Posthumous Members

Estate of Joan Ann Battersby
Estate of Nancy Blackmun
Estate of Christine Bush
Estate of M. John Buzawa
Estate of Patricia Farley
Estate of Ronald Furman
Estate of Clara Gilman
Estate of Jean Groff
Estate of Henry R. and
Ruth Ann Hermanowski
Estate of Bernard W. Johnson
Estate of Francis D. Jung
Estate of Betty Lohr
Estate of Evelyn F. Lutz
Estate of Denison McRel
Estate of Hilda Neary
Estate of Janice M. Olyslager
Estate of Jane Schyve
Estate of Erika Verthe
Estate of Helen Vogel
Estate of Lynn Willard

^ *New Member in 2025*
+ *Denotes Deceased*

DESIGNATED GIVING LIST

Thank you to the generous donors who supported the Zoo Society through grants, sponsorships, bequests, corporate contributions, in-kind contributions, and individual gifts of \$500 or more. Thank you for believing in us and the important work we do.

Capital

Anonymous
Maureen Baran
Carol Brink
Karen Dobbins
Ann Marie Dozier and Guy Martin
Jim Grapenstetter
John Littwitz and Anne Shepanski
Kip and Amy Palmer Family
Foundation

Education and Conservation Action

Lee and Kathy Anderson
Bruce Coates and
Michelle Hargrave
Judith and Joseph Darweesh
Wayne Demyda
Katherine and Chris Diehl
Joan Feinbloom
David Guadagnino and
Mary Beauchamp
Irmgard Hahn
Lynn Harris
Scott Hecker
Susan Henderson
Barbara Hendry
Dick Hogestyn
Jane Littwitz
Rich and Bobbi Mohrmann
Kathleen Platco
James Reed
Jo Ann Richards
ROC the Day Donors
Carol and David Smereski
Stenzel Family Fund
Lisa Townson
Don and Carol Ulrich
Maureen Whalen
Tamara Whitbeck

Education and Conservation Sponsors

DelMonte Hotel Group
Diamond Packaging
Five Star Bank
Reimer Home Services

Endowment

Estate of Helen Vogel
Estate of Lynn Willard

Events

1RDG
Admar Supply Company Inc.
Allendale Columbia School
Anthony Butera Team Keller
Williams Realty
B&L Wholesale Supply
Len and Lorri Bayer
Matthew Belanger and
Carol McKenna
Bene-Care
BioLife Plasma Services, L.P.
Megan Blakeney
Bond, Schoeneck & King, PLLC.
Dan and Amanda Brady
Brandtatorship
Brite
Richard and Tina Brockmann
Brown & Brown of New York, Inc.
Stephen Brown and Kirsten Allen
Brown
Gavin and Danelle Brownlie
Louis and Jennifer Buono
Luis Burgos
Katrina Busch and John Quinn
Linda and John Buttrill
C.P. Ward, Inc.
Canandaigua National Bank
Kaitlyn and Sutton Carhart
Catenary Construction Corp
Chamberlain Septic & Sewer
Christa Construction, LLC
crosby-brownlie, Inc.
Chris and Dawn Davison
DGA Builders, LLC
Diamond Packaging
Phil and Victoria DiTramontos
Mo and Bob Dobies
Dolomite Products Company Inc.
Shelly and Kirk Doran
Tarek and Pamela Eldaher
Emil Muller Foundation
Empire Merchants North
Neal and Christine Evans
Excellus BlueCross BlueShield, Inc.
Erin Faville
Jesse and Michele Ferguson
Five Star Bank
Forgensi Family
Frontline Security and Protection,
LLC.

Philip and Beverly Gelsomino
Glover-Crask Charitable Trust
Bill and Rhonda Goodrich
GreenSpark Solar
Hamilton Stern Construction LLC
Sarah Hanson
Chris Hewitt
Hewitt Young Electric LLC
Hodgson Russ LLP
I.B.E.W. Local Union #86
Impact Earth
Jack's Extra Fancy
JP Morgan Chase
Karpus Investment Management
KB Signaling, Inc.
Barbara Kelley and Tom Riley
Kinecta Federal Credit Union
Christine Klos and Don White
Lora and John Koch
Lisa Kribs and Courtney Brown
Chris and Kari LaBounty
Lake Beverage Corporation
Katie Lally
Kenneth and Jeanne Lally
LeChase Construction Services,
LLC
Jeff and Kristen Leenhouts
Lento
Littwitz Family Fund
Living Roots Wine & Co.
Cait and John Lory
Dan and Christina Matteo
McCarthy Tents & Events
Jim and Linda McElheny
Jim and Courtney McKenna
NexTier Bank
Pamela O'Connor Chapman and
Kenneth Hines
On Services
Ontario Exteriors
Julie Orchard
Medved Running & Walking
Outfitters
Holly Merrill and David McDonald
Renee Minarik
New York Life Insurance Company
New York State Office of
Developmental Disabilities
Panther Graphics
W. Jack and Kristina Plants
Tim and Julie Pullis

Radio Social, LLC
Rapp Creative
Regent Financial Group LLC
Reimer Home Services
Reliant Credit Union
Renewal by Andersen
Ria's Wines
Rochester Kung Fu & Fitness Inc.
Rochester, NY Chapter, NECA
Rock Emergency
Eric and Susan Rueckwald
Ry-Gan Printing, Inc.
Schuler-Haas Electric Corp.
Sheet Metal Workers' Local 46
Sheet Metal and Air Conditioning
Contractors' National
Association of Rochester
SimuTech Group Inc.
SSA Group
Chris and Courtney Stern
Stifel Investments - The Brown
Group
The Summit Federal Credit Union
Kathleen and Andrew Tedesco
Tim Hortons - Rochester
Mark Tolbert and Hannah Coney
Tompkins Community Bank
UA Local 13 Plumbers, Pipefitters
& Service Techs
Visit Rochester
Debra and Mike Walker
Wegmans Food Markets
Jim White
Tom and Phyllis Wickerham
Woods Oviatt Gilman LLP

Foundation Support

Daisy Marquis Jones Foundation
The Donald F. & Maxine B.
Davison Foundation
Herman and Marlene Duerr Fund
ESL Charitable Foundation
The Joseph and Anna Gartner
Foundation
The Hallowell Fund
David Klos Memorial Fund
Lisk Morris Foundation
M&T Bank
Emil Muller Foundation
Mary S. Mulligan Charitable Trust
Paychex Inc.
Riedman Foundation
Leland T. Shafer Charitable Trust
Helen and Ritter Shumway
Foundation
Warner Fund
Westminster Barrington
Foundation

General Operating

Anonymous (3)
Association of Childrens Museums
Inc.
Joan Bangel
Len and Lorri Bayer
Nina Beach
Benevity Community Impact
Fund
Charles Berntson
Birchcrest Tree and Landscape
Bond, Schoeneck & King, PLLC.
Jane and Russell Chapman
Karen and Bill Crow
Robert and Janice Daitz
Mo and Bob Dobies
David and Patricia Gardner
Gianniny Family Fund
Anne Harrison
Hilton High School
Robert Howland
Raymond Jones
Thomas and Elisabeth Judson
Kinecta Federal Credit Union
Kronenberger Family Gift Fund
Lake Immunogenics Inc.
Doris Lally
Neal Levitt
LSI Solutions, Inc.
Rich and Bobbi Mohrmann
Marian Nelson
Donald Newcomb and Marilyn
Potter
Duncan Phillips
Reimer Home Services
Christopher and Jill Roberts
Helen Schneck
David Sharkey
Meredith J. Sorensen
Management Trust
SUNY Geneseo
David and Bonnie Swinford
U of R Medical Center
United Way Donors
Henry Wang and Chiru Lee
Claudia and David Weber
Webster Volunteer Fire
Department
Irene and Alan Weinberg Fund
Roxanne Young

In Situ

Nick Aloisio and Stephany Tedrow
Len and Lorri Bayer
James and Hollis Budd
Mo and Bob Dobies
Emil Muller Foundation

Kathleen Holt and Stephen Lurie
Lake Immunogenics Inc.
Littwitz Family Fund
Oceanic Global
Janet Reed
Rochester Hockey, LLC
Rochester Institute of Technology
David and Grace Strong Family
Fund
Claudia and David Weber
Glenn and Helen William

Matching Gift

Bank of America
Johnson & Johnson Family of
Companies
JP Morgan Chase
KeyBank
L3Harris Technologies, Inc.

Restricted

Causewave Community Partners
Susanna Ferris
The B. Thomas Golisano
Foundation
New Venture Fund
Tim Olsen and Carolyn Fisher
Stormwater Coalition of Monroe
County
Wegmans Food Markets

We take great care to ensure the accuracy of these lists. If a correction is needed, please let us know at 585.336.7205.

2024 FINANCIAL REPORT

Balance Sheet

Seneca Park Zoo Society for the year ended December 31, 2025

	General Operating Fund	Board Designated Fund	Restricted Gifts & Grants Fund	Capital Campaign Fund	TOTAL
ASSETS					
Cash	\$395,901	\$0	\$0	\$34,066	\$429,967
Investments	\$126,193	\$1,174,399	\$36,327	\$1,090,552	\$2,427,470
Endowment	\$0	\$3,179,128	\$1,089,889	\$0	\$4,269,017
Aab Endowment - Intern Program	\$0	\$0	\$177,967	\$0	\$177,967
Accounts Receivable	\$277,930	\$0	\$1,099	\$0	\$279,029
Grants Receivable	\$0	\$0	\$46,810	\$1,000,000	\$1,046,810
Pledges Receivable	\$15,158	\$0	\$1,000	\$10,700	\$26,858
Due From Other Funds - Internal	\$79,082	\$24,024	\$293,100	\$0	\$396,206
Inventory	\$14,179	\$0	\$0	\$0	\$14,179
Prepaid Expenses	\$76,989	\$1,800	\$0	\$0	\$78,789
Property & Equipment Net of Depreciation	\$66,129	\$37,769	\$0	\$0	\$103,898
TOTAL ASSETS	\$1,051,561	\$4,417,119	\$1,646,192	\$2,135,318	\$9,250,189
LIABILITIES & NET ASSETS					
Deferred Revenue	\$127,758	\$0	\$0	\$0	\$127,758
Accounts Payable	\$23,884	\$0	\$0	\$0	\$23,884
County Contract Obligations	\$64,605	\$0	\$0	\$1,048,943	\$1,113,548
Accrued Payroll & Payroll Taxes	\$102,733	\$0	\$0	\$0	\$102,733
Accrued Vacation	\$101,624	\$0	\$0	\$0	\$101,624
Due To Other Funds - Internal	\$176,929	\$160,778	\$1,863	\$56,636	\$396,206
TOTAL LIABILITIES	\$597,533	\$160,778	\$1,863	\$1,105,579	\$1,865,753
Beginning Net Assets	\$454,028	\$4,153,676	\$1,268,403	\$1,202,270	\$7,078,377
Net Surplus/(Deficit)	\$0	\$102,665	\$375,925	(\$172,531)	\$306,060
ENDING NET ASSETS	\$454,028	\$4,256,341	\$1,644,329	\$1,029,739	\$7,384,436



 Seneca Park
Zoo Society
Connect. Care. Conserve.

2222 St. Paul Street | Rochester, NY 14621 | senecaparkzoo.org